

Boatbuilding

with

Wendy Hinman

and

Garth Wilcox

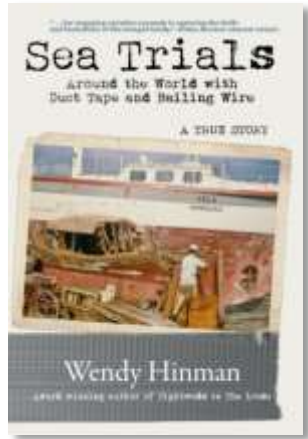
Garth Wilcox
during his
circumnavigation



Vela during Garth Wilcox 's
circumnavigation



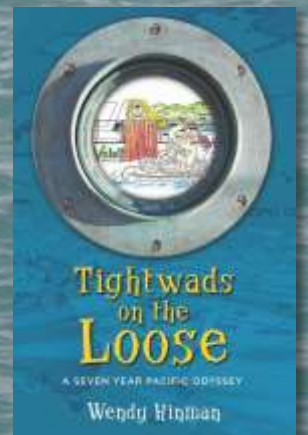
Garth Wilcox,
repairing
after the shipwreck



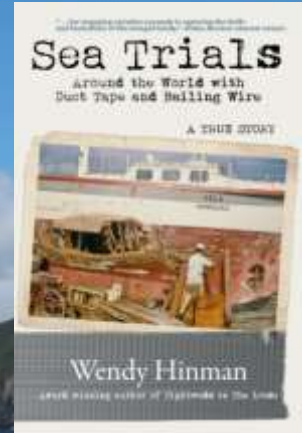
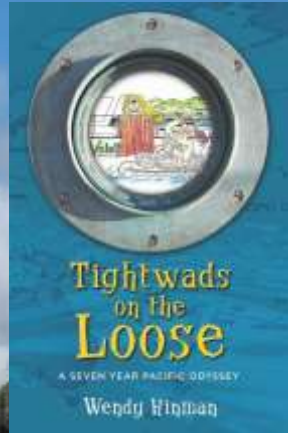
Read the details
in the book



Garth Wilcox & Wendy Hinman
Voyage aboard Velella
34,000 miles



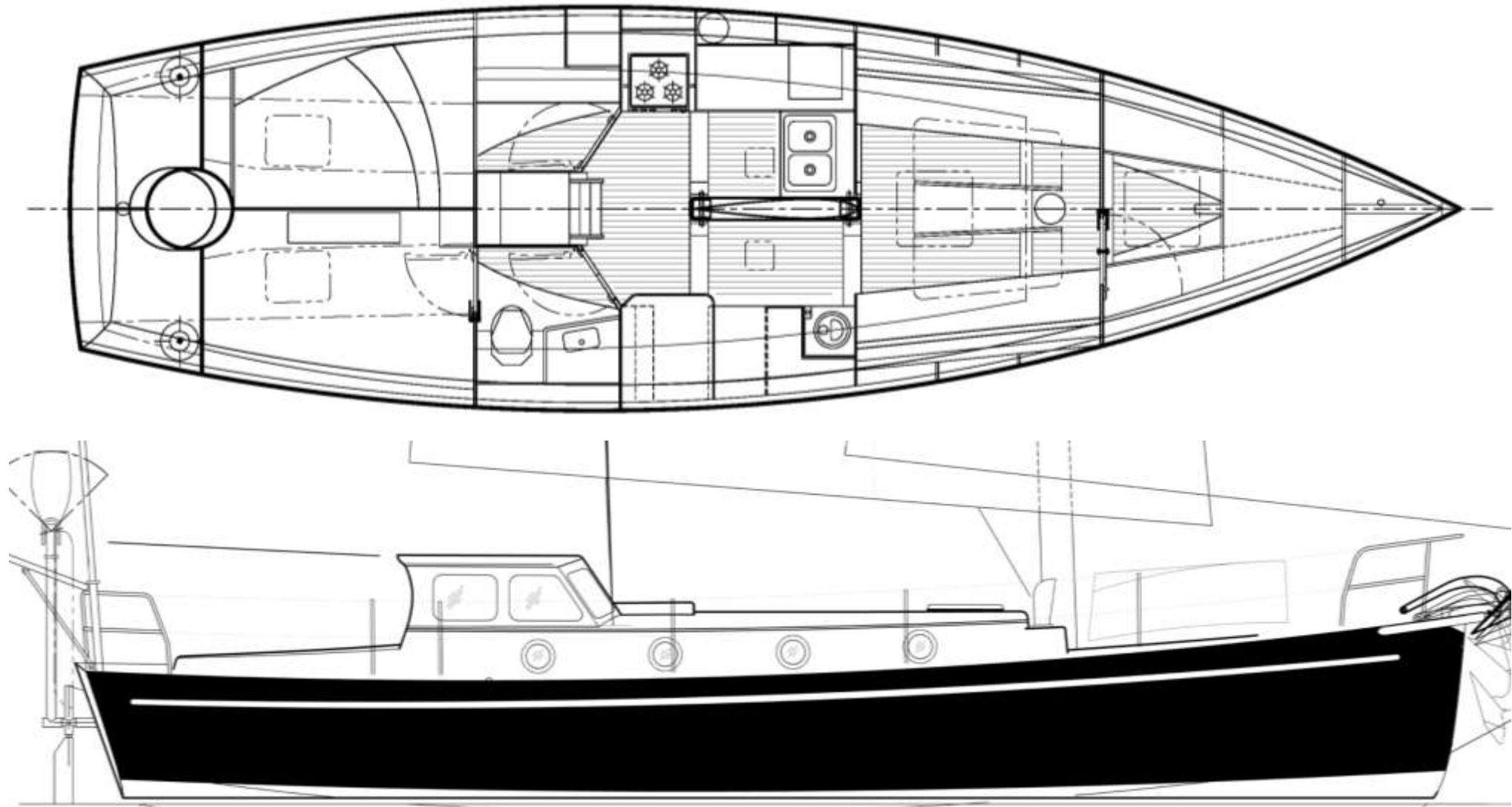
Explore our adventures
through these books.



A Window into our Boatbuilding Project:



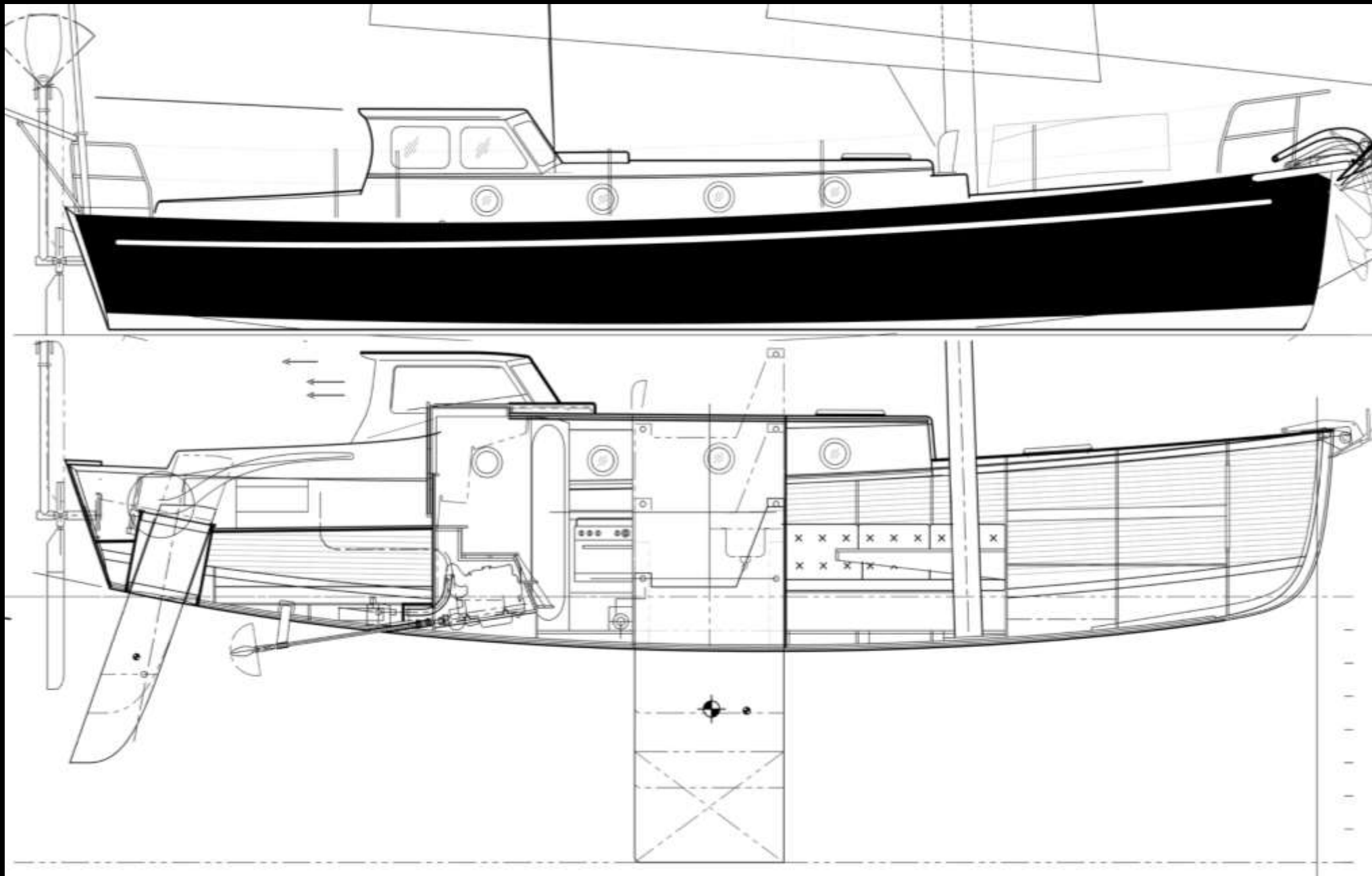
The Design



Specifications & key features:

LOA	38'-6"
LWL	35'-6"
BOA	11'-1"
BWL	9'-9"
Draft (max)	8'-0"
Draft (min)	4'-0"
Displacement (Full Load)	17600 lb.
Displacement (Light)	14500 lb.
Ballast	4500 lb.
Wetted Surface	371 ft ²
Sail Area	850 ft ²
Water	100 gal.
Fuel	35 gal.





A person is using a miter saw to cut a piece of wood. The saw is mounted on a stand and has a green blade guard. The person is wearing a dark shirt and is holding the wood steady with their hands. The wood is a light-colored, rectangular piece. The background shows a workshop floor with some sawdust and other tools.

The Beginning ...





























05/26/2014 17:13

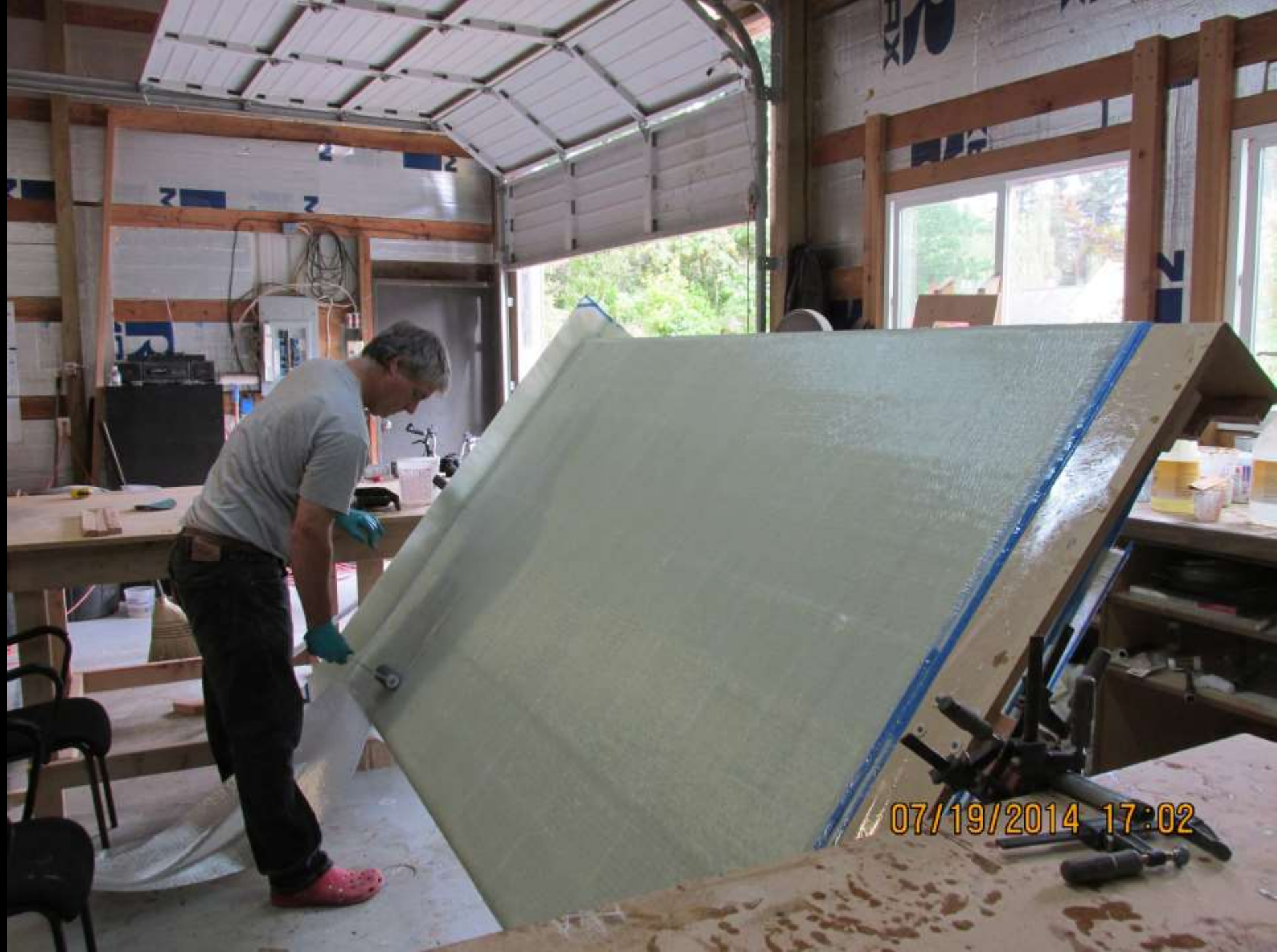


05/26/2014 17:15

Building the Keel Trunk for the Lifting Keel







07/19/2014 17:02



07/26/2014 13:04



07/27/2014 17:37





08/31/2014 15:19



09/01/2014 13:21



10/08/2014 17:34



10/08/2014 17:36





































Building the trunk for the rudder



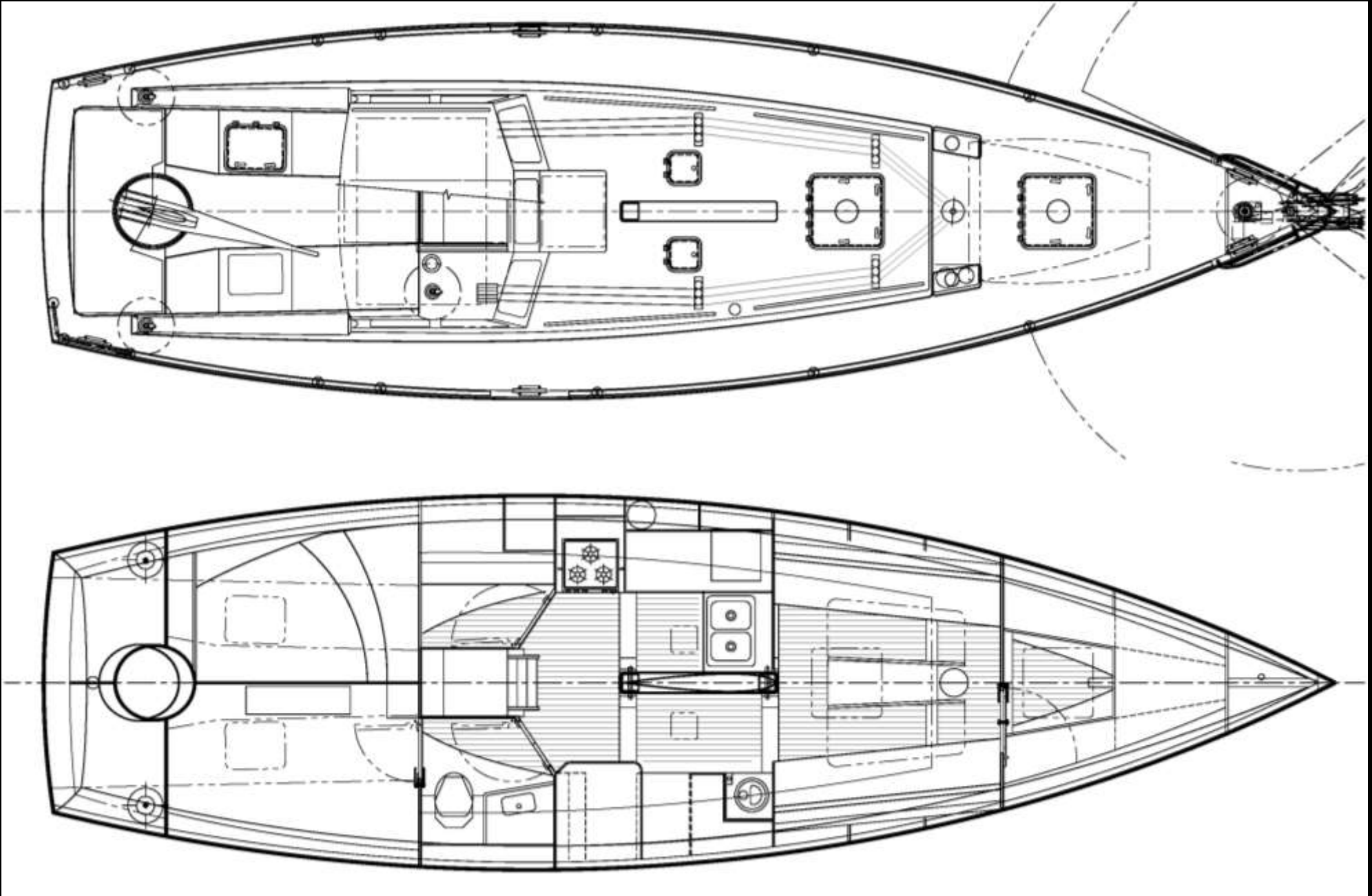
A scary step to cut the hole for the rudder housing















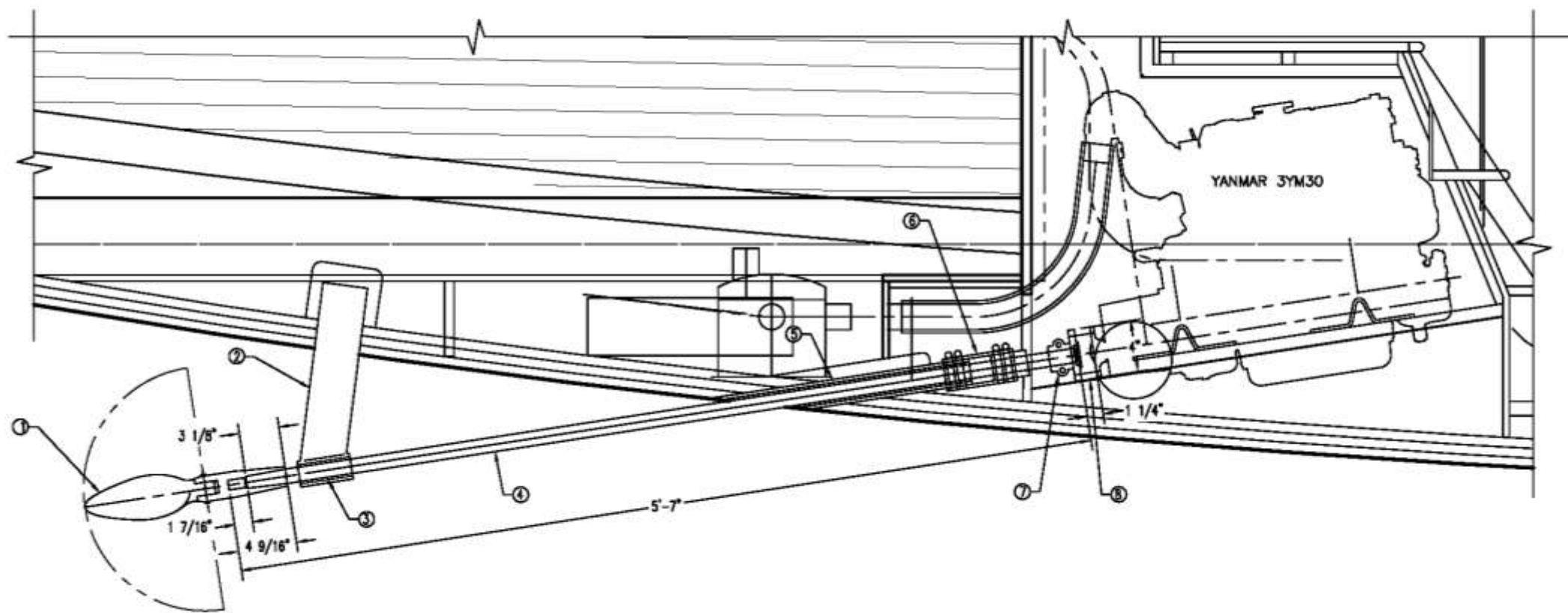


























































































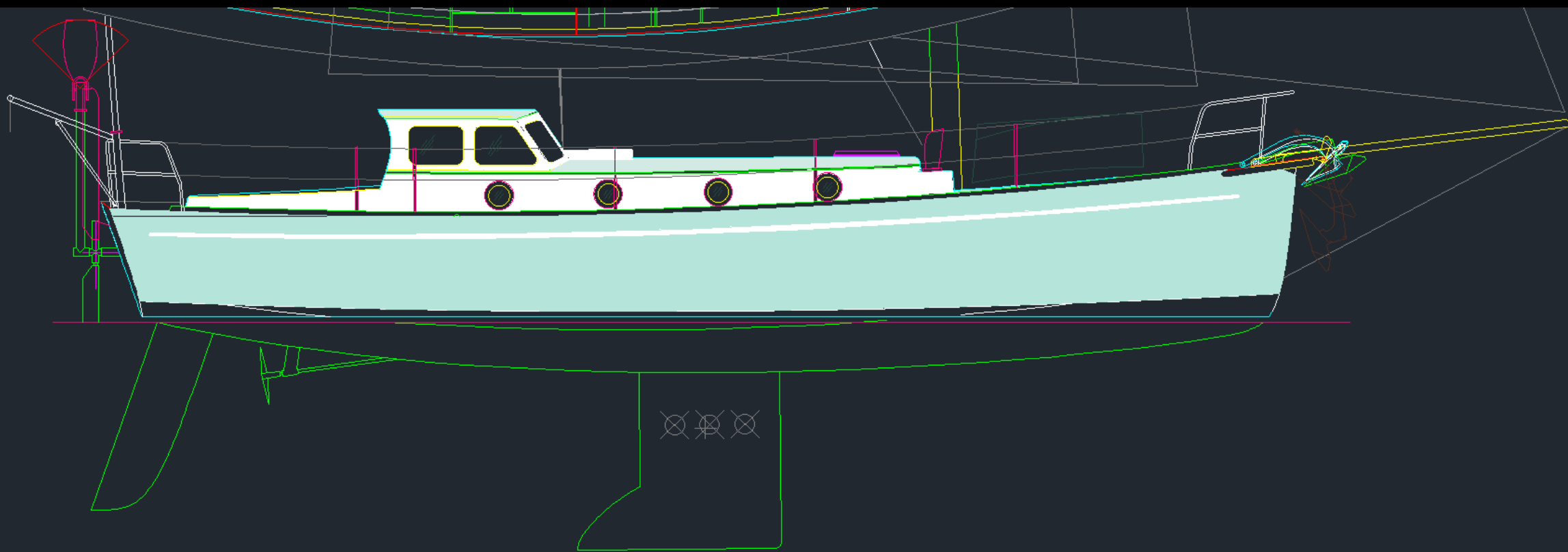












Wendy Hinman and Garth Wilcox
For more info, please visit: www.wendyhinman.com